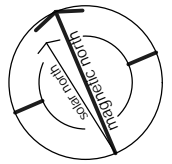


WINTERGREEN

3 Purcell Street, Bowral

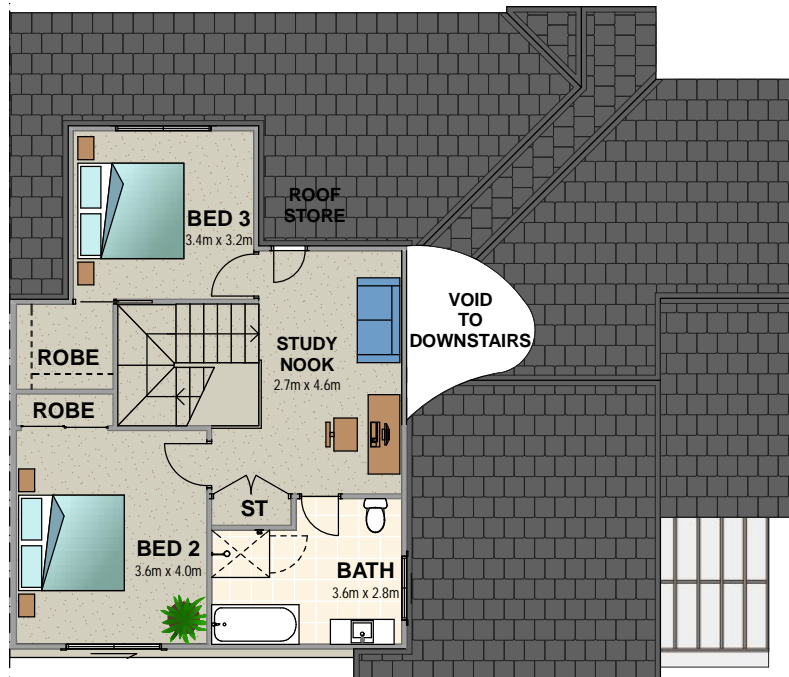
HOUSE 2
ADJOINS



GROUND FLOOR PLAN

*measurements in bedrooms are clear of wardrobes

HOUSE 2
ADJOINS



FIRST FLOOR PLAN

HOUSE 1

Ground floor area 143.33m²

First floor area 64.24m²

Total floor area 207.57m²