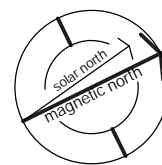
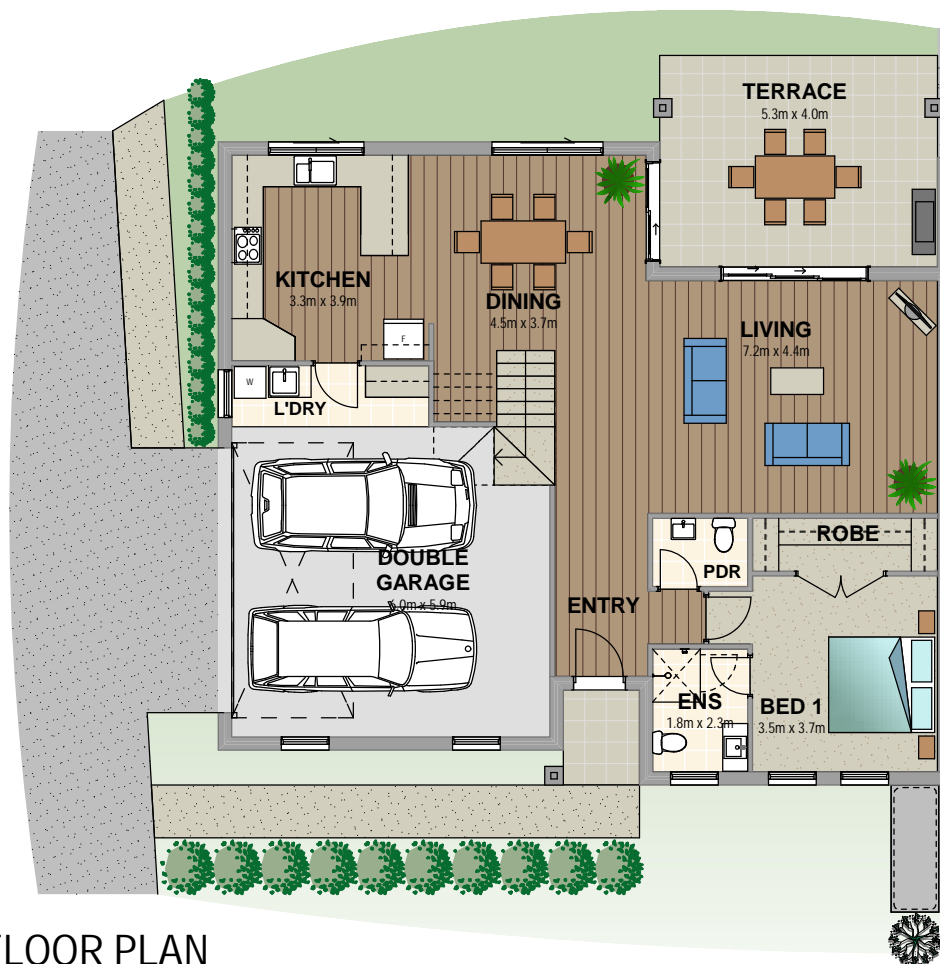


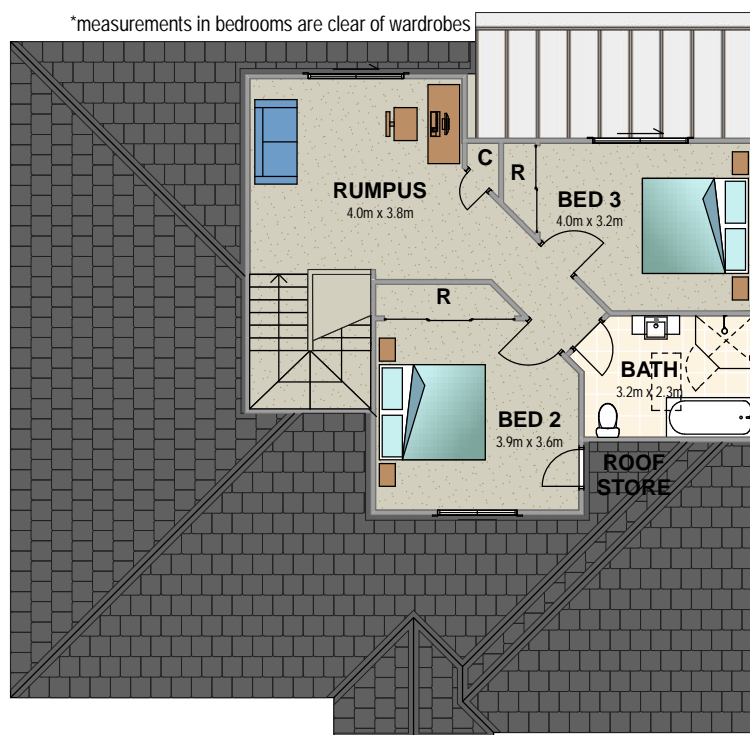
# WINTERGREEN

3 Purcell Street, Bowral



HOUSE 6  
ADJOINS

GROUND FLOOR PLAN



HOUSE 6  
ADJOINS

FIRST FLOOR PLAN

## HOUSE 5

Ground floor area 147.19m<sup>2</sup>

First floor area 65.31m<sup>2</sup>

Total floor area 212.5m<sup>2</sup>