

# WINTERGREEN

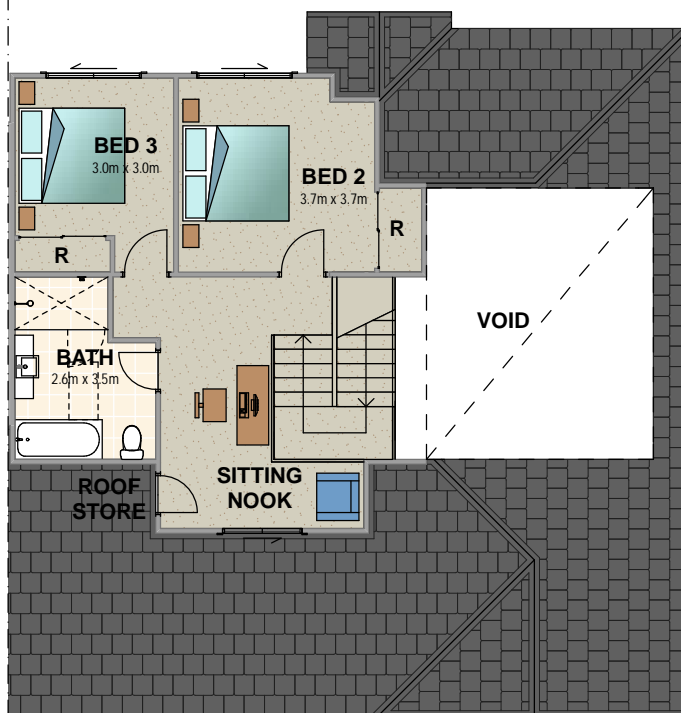
3 Purcell Street, Bowral

HOUSE 5  
ADJOINS



\*measurements in bedrooms are clear of wardrobes

HOUSE 5  
ADJOINS



## HOUSE 6

Ground floor area 131.77m<sup>2</sup>

First floor area 59.36m<sup>2</sup>

Total floor area 191.13m<sup>2</sup>