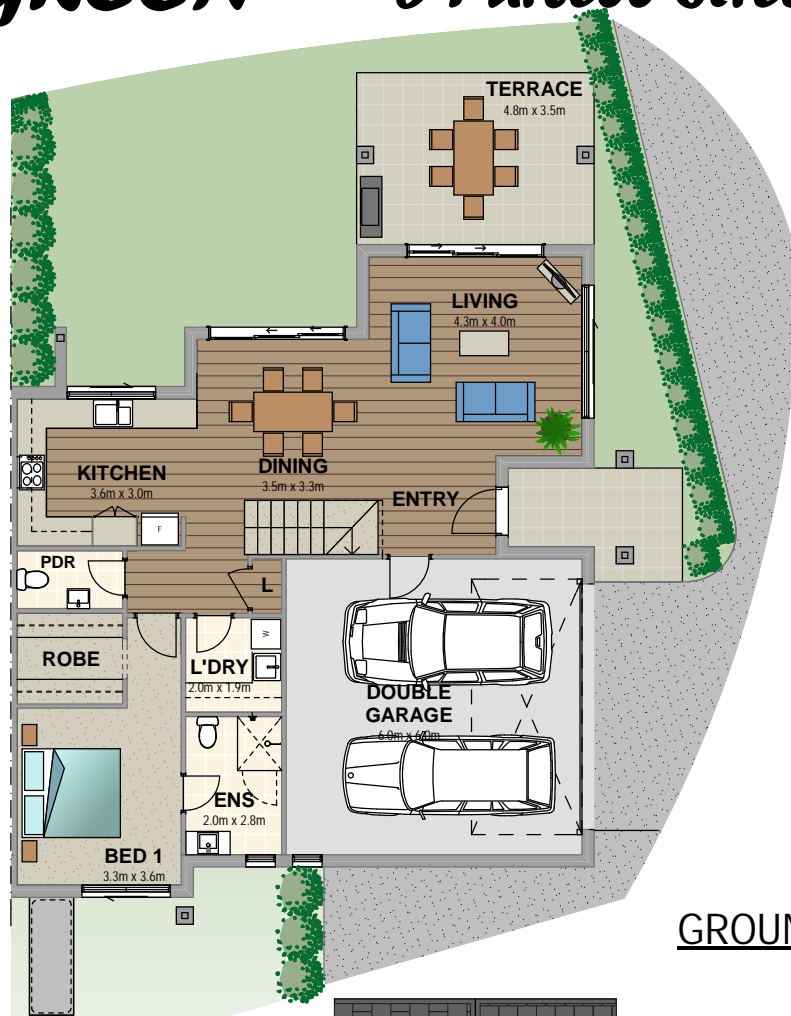


# WINTERGREEN

3 Purcell Street, Bowral

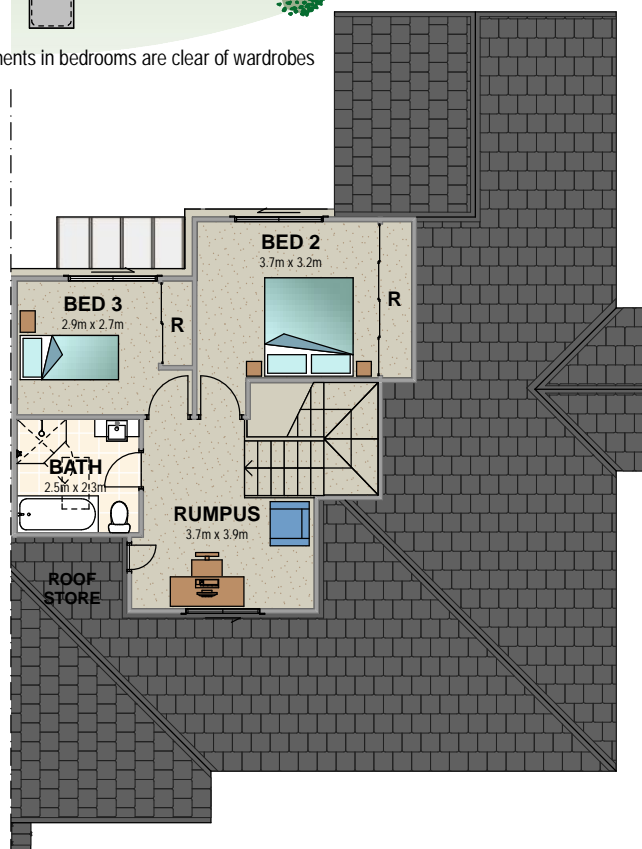
HOUSE 7  
ADJOINS



GROUND FLOOR PLAN

\*measurements in bedrooms are clear of wardrobes

HOUSE 7  
ADJOINS



FIRST FLOOR PLAN

## HOUSE 8

Ground floor area 133.94m<sup>2</sup>

First floor area 52.23m<sup>2</sup>

Total floor area 186.17m<sup>2</sup>