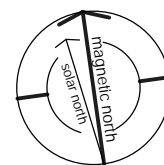
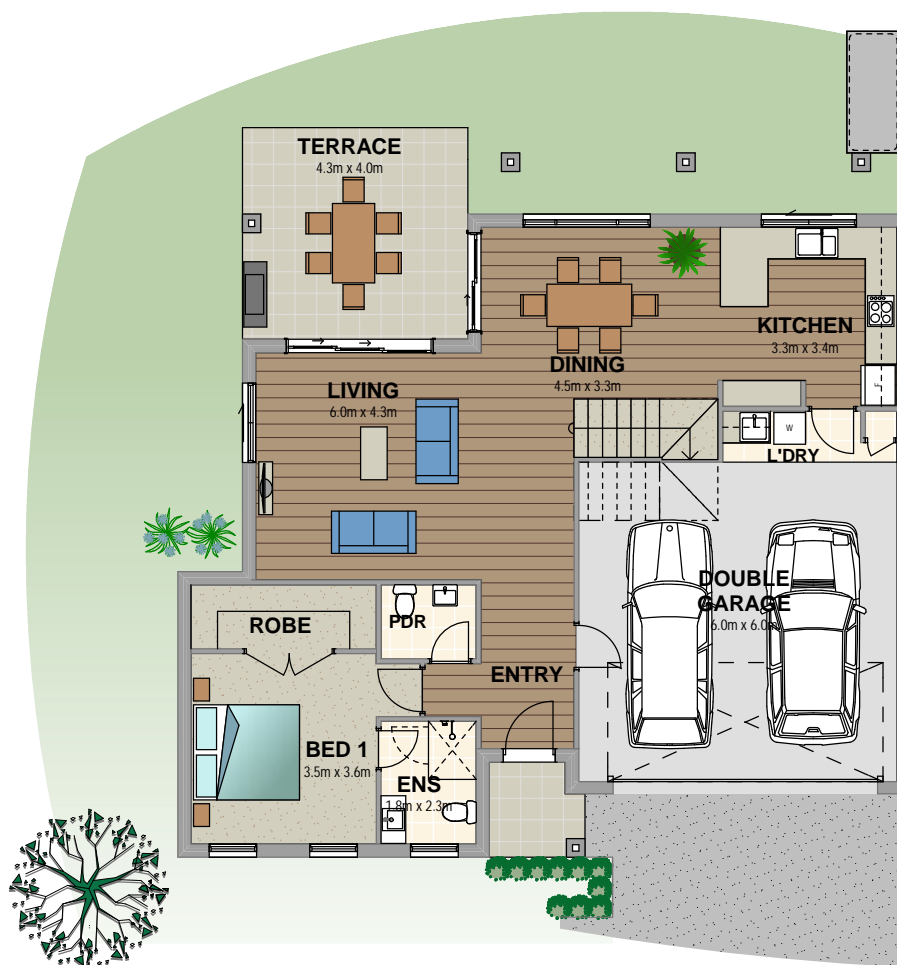


WINTERGREEN

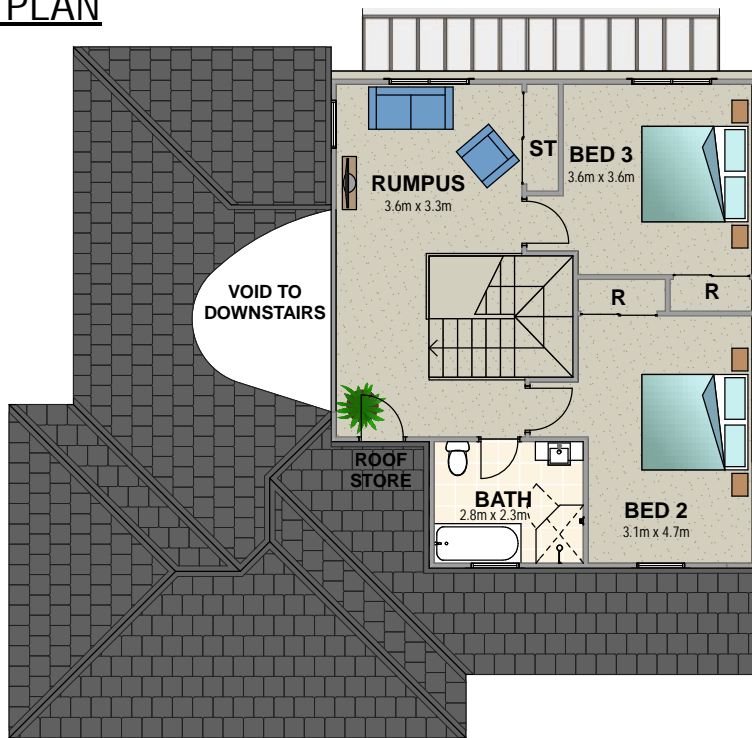
3 Purcell Street, Bowral



HOUSE 10
ADJOINS

GROUND FLOOR PLAN

*measurements in bedrooms are clear of wardrobes



HOUSE 10
ADJOINS

FIRST FLOOR PLAN

HOUSE 9

Ground floor area 138.29m²

First floor area 70.28m²

Total floor area 208.57m²